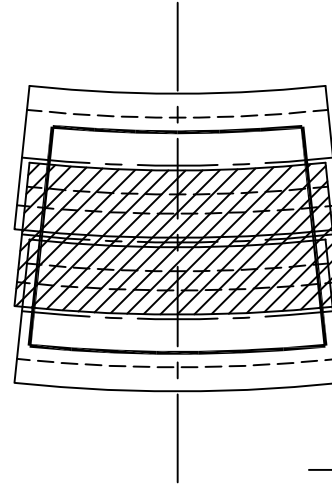


Copyright (c) 2001
TERRAMETRA RESOURCES
All Rights Reserved

NORTH ↑
 DATUM: NAD27
 ZONE: COLORADO CENTRAL
 STATION: LONGS PEAK
 ϕ 40°15'18.094"N
 λ 105°36'52.404"W
 R _____
 θ _____
 $N(y)$ _____
 $E(x)$ _____
 k _____



R_b _____
 $E_o(C)$ _____
 $\sin(\phi_o)$ _____

